



- ULISSE IP comprehensive of video server integrated in the base for IP control of PTZ functions
- Continuous rotation
- Variable speed: 0.1°-100°/s Pan and 0.1°-40°/s Tilt
- Video Management SW in bundle
- Recording on PC hard disk

ULISSE IP is the first integrated outdoor PTZ unit for video surveillance with full integration in a network system.

This positioning unit is comprehensive of a built-in video compression module, to allow the IP control of all the PTZ functions. All video and telemetry analog signals are converted and sent through Ethernet cable for an easy control through a PC dedicated software.

The system offers the highest video compression rate via MPEG-4 technology for live like images and faster on-line image transmission.

The max frame rate is 30fps with max picture resolution Full D1.

The recording is made directly on the PC hard disk.

It is possible to connect a joy-stick to PC peripheral port for the PTZ control. Easy configuration with dedicated software.

*This integrated unit meets the advantage of an IP controlled system with the high performance and the perfect positioning needed for a surveillance application. The rotation on the horizontal axis is continuous with a variable speed up to 100°/s while the amplitude on the vertical axis varies from -90° to +40° with a max speed of 40°/s. ULISSE IP fits most of combinations of cameras and lenses or in alternative can be supplied with a built-in camera module.**

It is equipped with thermostatically controlled heater and sunshield assuring an optimal operating temperature.

The positioning unit can be used in several kinds of installations, such as: coast and border patrol, harbour control, urban settings, highway and traffic monitoring, stadiums, industries, prisons or military applications, and perimeter surveillance.

* for further specs on the block camera, refer to the technical data sheet "ULISSE CAMERA, Positioning unit with integrated camera".

TECHNICAL DATA

ULISSE IP							
Model	Power supply 230Vac	Power supply 24Vac	PAL block camera	Wiper	IR bracket	Encoders	Germanium glass
UPT1SVSAX00C	•						
UPT2SVSAX00C		•					
UPT1SVWAX00C	•			•			
UPT2SVWAX00C		•		•			
UPT1SVRAX00C	•				•		
UPT2SVRAX00C		•			•		
UPT1SVTAX00C	•			•	•		
UPT2SVTAX00C		•		•	•		
UPT1PVSAX00C	•		•				
UPT2PVSAX00C		•	•				
UPT1PVWAX00C	•		•	•			
UPT2PVWAX00C		•	•	•			
UPT1PVRAX00C	•		•		•		
UPT2PVRAX00C		•	•		•		
UPT2SVDAX00C		•		•		•	
UPT2PVDAX00C		•	•	•		•	
UPT1PVTAX00C	•		•	•	•		
UPT2PVTAX00C		•	•	•	•		
UPT 1SVGAX00C	•						•
UPT 2SVGAX00C		•					•

GENERAL

Built-in video compression module
 Compression MPEG-4
 Connection Ethernet port LAN 10/100T
 Picture resolution:
 Full D1 (720x576)
 VGA (640x480)
 CIF (352x288)
 QCIF (176x144)
 Image frame rate max 30fps at Full D1
 Web Server
 Build in die-cast aluminium and ABS
 Epoxypolyester powder painting, RAL9002 colour
 Electronic limit switches
 Plug installation thanks to connector and easy replacement on-site
 Zero backlash

MECHANICAL

3 removable cable glands M16
 Horizontal continuous rotation
 Vertical rotation -90° to +40°
 Variable pan speed: from 0.1° up to 100°/s
 Variable tilt speed: from 0.1° up to 40°/s
 Internal usable area (BxHxL): 104x70x280mm (4.1x2.7x11in)
 Internal usable area with reversed slide (BxHxL): 68.5x84x280mm (2.7x3.3x11in)
 Internal usable area version with wiper: see drawing
 Enclosure glass window (BxH): 118x75mm (4.6x2.9in)

ELECTRICAL/VIDEO

Input voltage: 230Vac or 24Vac, 50/60Hz, 120W max
 Absorbed current: 0.5A (230Vac), 1.0A (120Vac), 4.0A (24Vac)
 Alarm input: 10-35Vdc
 Clean contacts: max 50Vdc or 30Vac @ 1A
 Housing standard heater 24Vac, 20W max
 Housing wiper: 24Vac, 50/60Hz, 7W consumption max
 Lens output: 6-15Vdc, max 200mA
 Only polarity inversion lenses
 Autopan, Preset, Patrol
 20 characters string for Area and Preset titling
 Preset accuracy: 0.02°

COMMUNICATIONS

Ethernet LAN 10/100 through UTP cat. 5E cable

ACCESSORIES

UPTHT1	Reinforced heater for low temperatures, 30W
UPTWBA	Wall bracket with internal cable channel
UPTWBTA	Parapet bracket with internal cable channel

RELATED PRODUCTS

PTCC1	Pole mount adaptor for UPTWBA
WCWGC	Corner adaptor for UPTWBA
UPTWAS01C	Reservoir 23l with pump, 230Vac
UPTWAS02C	Reservoir 23l with pump, 24Vac
UPTWASA01C	Reservoir 23l with pump, high delivery up to 30m, 230Vac

ENVIRONMENT

Indoor / Outdoor

Operating temperature: -20°C / +50°C (+14°F / +122°F)

COMPLIANCE TO

CE according to EN60950, EN61000-3-2 and EN50130-4, EN55022 Classe A

FCC part 15 Class A

IP66 according to EN60529



Unit Weight:

UPT1SVSAX00C	16.3kg / 36lb
UPT1SVWAX00C	16.8kg / 37lb
UPT1SVRAX00C	16.8kg / 37lb
UPT1SVTAX00C	17.3kg / 38.1lb
UPT1PVSAX00C	16.3kg / 36lb
UPT1PVWAX00C	16.8kg / 37lb
UPT1PVRAX00C	16.8kg / 37lb
UPT1PVTAX00C	17.3kg / 38.1lb

Package Weight:

UPT1SVSAX00C	19.5kg / 43lb
UPT1SVWAX00C	20kg / 44lb
UPT1SVRAX00C	20kg / 44.1lb
UPT1SVTAX00C	20.5kg / 45.2lb
UPT1PVSAX00C	19.5kg / 43lb
UPT1PVWAX00C	20kg / 44lb
UPT1PVRAX00C	20kg / 44lb
UPT1PVTAX00C	20.5kg / 45.2lb

Package Dimension (BxHxL):

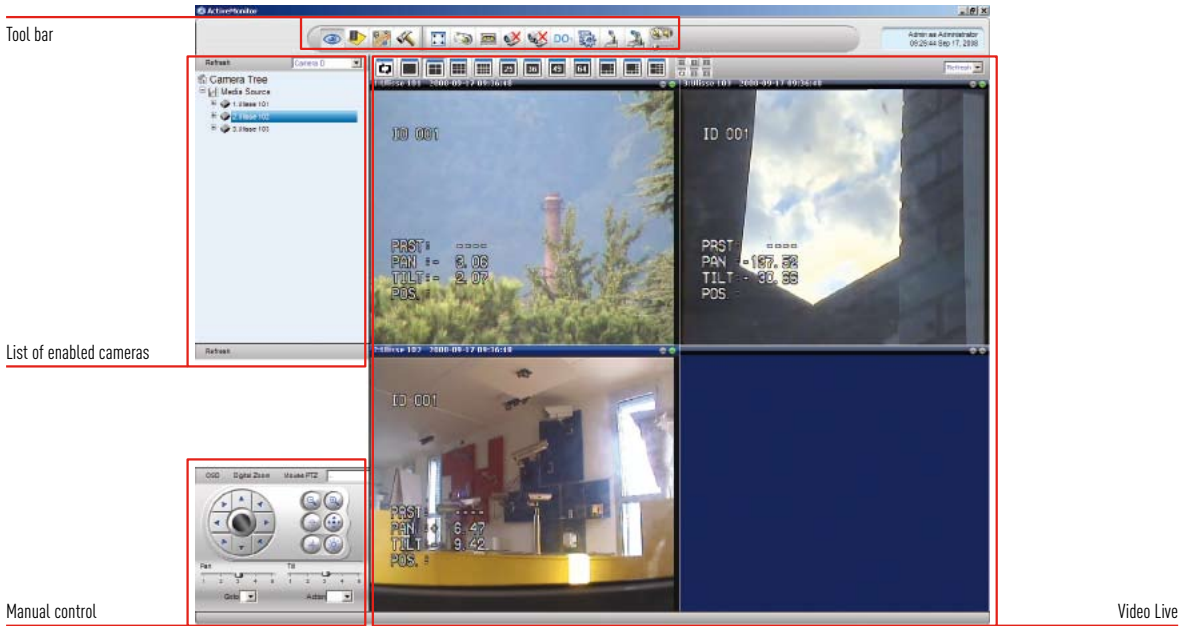
UPT1SVSAX00C	66x33x57cm / 26x13x22.5in
UPT1SVWAX00C	66x33x57cm / 26x13x22.5in
UPT1SVRAX00C	66x33x57cm / 26x13x22.5in
UPT1SVTAX00C	66x33x57cm / 26x13x22.5in
UPT1PVSAX00C	66x33x57cm / 26x13x22.5in
UPT1PVWAX00C	66x33x57cm / 26x13x22.5in
UPT1PVRAX00C	66x33x57cm / 26x13x22.5in
UPT1PVTAX00C	66x33x57cm / 26x13x22.5in

Master Carton:

UPT1SVSAX00C	-
UPT1SVWAX00C	-
UPT1SVRAX00C	-
UPT1SVTAX00C	-
UPT1PVSAX00C	-
UPT1PVWAX00C	-
UPT1PVRAX00C	-
UPT1PVTAX00C	-

SOFTWARE E CONFIGURAZIONE

Screen example of control software



9 INTEGRATED POSITIONING UNITS

Screen example of browser configuration

