

- Indoor/outdoor installation
- Stainless Steel AISI 316

**NXWBS1** • Heavy duty bracket with joint, made of AISI 316 thick gauge stainless steel. The rotation of the joint along the vertical and horizontal axes allows a wide range of positions. It is particularly suitable for stainless steel weather-proof housings. It can be combined with NXCW and NXCOL pole and corner mount adaptors.

**NXWBL** • Heavy duty wall bracket with joint for NXL housing. Made of AISI 316 thick gauge stainless steel. The rotation of the joint along the vertical and horizontal axes allows a wide range of positions. It can be combined with NXCW and NXCOL pole and corner mount adaptors.

**NXWBPTH1** • Heavy duty bracket, made of AISI 316 thick gauge stainless steel. It is particularly suitable for stainless steel Pan & Tilt motors. It can be combined with NXCW and NXCOL pole and corner mount adaptors.

**NXFWBT** • Parapet mount for NXPTH P&T serie made of AISI 316 thick gauge stainless steel. It can be coupled with the NXWBPT wall bracket.

**NXCW** • Corner mount adaptor, made of AISI 316 sheet steel. Suitable for NXWBS1, NXWBL and NXWBPTH1 brackets.

**NXCOL** • Pole mount adaptor, made of AISI 316 sheet steel. Suitable for NXWBS1, NXWBL and NXWBPTH1 brackets.

**ONXAB1** • Flange designed to create an air barrier in front of the glass, preventing the formation of dust deposits. It also attenuates the heat on the housing NXW. It is supplied standard on NXW housing and optional NXM housing.

**NXFIGRU** • Air filtering group, to be coupled with ONXAB1, purifies the air drawn from a compressor.

**Washer and reservoir** • Glass washing kit available with 5 or 25l (1.3 or 6.6gal) reservoir. The pump is available in 24V AC and 230V AC, and in 230V AC with high delivery, up to 30m (100ft). Available for NXM, NXL, NXJ series housing.



## TECHNICAL DATA

5

STAINLESS STEEL SYSTEMS

### BRACKETS AND ACCESSORIES

	NXWBS1	NXWBL	NXWBPTH1	NXFWBT
<b>Housings</b>				
<b>NXJ</b>	•			
<b>NXL</b>		•		
<b>NXM</b>	•			
<b>NXW</b>	•			
<b>P&amp;T's</b>				
<b>NXPTH</b>			•	•
<b>Adapters</b>				
<b>NXCW</b>	•	•	•	
<b>NXCOL</b>	•	•	•	

### GENERAL

Entirely made of polished AISI 316 stainless steel

### MECHANICAL

#### NXWBS1

Wall installation or on modular adaptors

Length: 370mm (14.5in)

Load rating: 45kg (99lb)

Ball-joint inclination: horizontal -95° / +95°, vertical -90° / 0°

#### NXWBL

Wall installation or on modular adaptors

Length: 596mm (23.5in)

Load rating: 70kg (154lb)

#### NXCW

Corner installation

Dimensions: 180x291mm (7x11.5in)

Load rating: 50kg (110lb)

#### NXCOL

Pole installation

Dimensions: 180x196mm (7.0x7.7in)

Load rating: 50kg (110lb)

Pole: Ø 110-150mm (4.3-5.9in)

#### NXWBPTH1

Wall installation or on modular adaptors

Length: 596mm (23.5in)

Load rating: 70kg (154lb)

#### NXFWBT

Parapet installation or on NXWBPTH1 wall bracket

Height: 124mm (4.9in)

Load rating: 70kg (154lb)

#### ONXAB1 - ONXAB1025

Standard on NXW housing and optional NXM housing

Dimension Ø 154x21mm (6x0.8in)

Male input 1/2" GAS

Max pressure 2.5 Bar, application example:

- air pressure 1 Bar, consumption 7m<sup>3</sup>/h
- air pressure 1.5 Bar, consumption 10m<sup>3</sup>/h
- air pressure 2 Bar, consumption 12m<sup>3</sup>/h
- air pressure 2.5 Bar, consumption 14m<sup>3</sup>/h

### NXFIGRU

3 filters in cascade (20micron, 5micron, 0.1micron)

Dimensions: 227x275x104mm (8.9x10.8x4in)

Input and output: 1/2"

Suggested pressure: 0.3-2.5 Bar

Filtering: 0.1 micron

Supplied with instruction manual

### Washer pump and tanic of 5 liters

Dimensions (BxHxL): 217x272x254mm (8.5x10.7x10.0in)

Reservoir capacity: 5L (1.3gal)

Delivery head: max 5m (1.6ft)

Tube length: 4m (13ft)

IN 230V AC, consumption 12W max

IN 24V AC, consumption 12W max

IP56

Supplied with instruction manual and antifreezing liquid

### Washer pump and tanic of 25 liters

Dimensions (BxHxL): 301x458x345mm (11.8x18.0x13.6in)

Reservoir capacity: 25L (6.6gal)

Delivery head: max 5m (1.6ft)

Tube length: 4m (13ft)

IN 230V AC, consumption 12W max

IN 24V AC, consumption 12W max

IP56

Supplied with instruction manual and antifreezing liquid

### Washer pump high delivery up to 30m

Dimensions (BxHxL): 710x300x270mm (28x12x11in)

Reservoir capacity: 25L (6.6gal)

Delivery head: max 30m (98ft)

Tube length: 30m (98.5ft)

IN 230V AC, consumption 600W max

IP45

Supplied with instruction manual and antifreezing liquid

### PART NUMBER

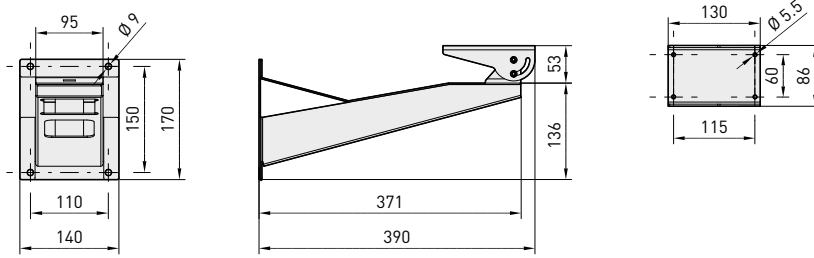
VIP5WAS01	Tank 5L, 230V AC washer pump
VIP5WAS02	Tank 5L, 24V AC washer pump
VIP25WAS01	Tank 25L, 230V AC washer pump
VIP25WAS02	Tank 25L, 24V AC washer pump
VIP25WASA01	Tank 25L, 230V AC washer pump, high delivery up 30m

### ENVIRONMENT

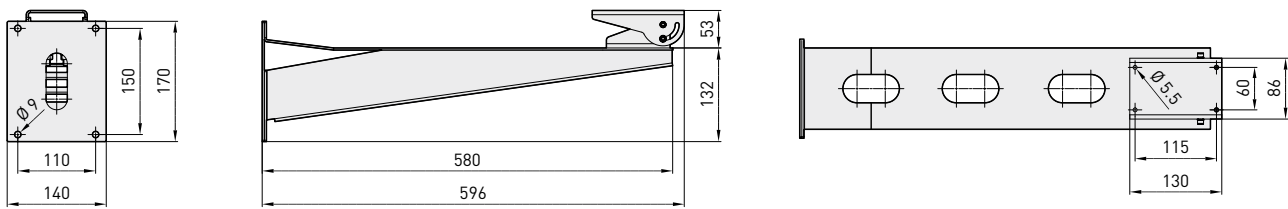
Indoor / Outdoor

# INOX BRACKETS AND ACCESSORIES

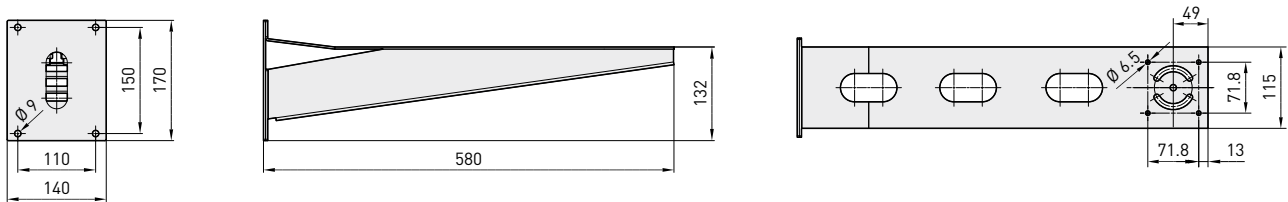
**NXWBS1**



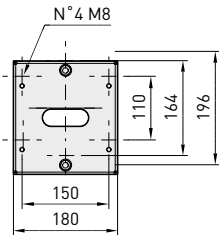
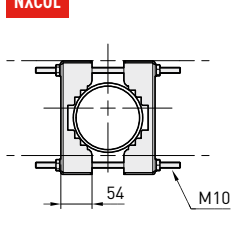
**NXWBL**



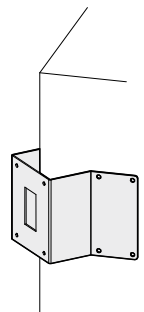
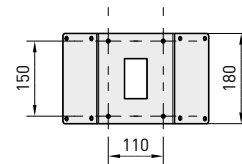
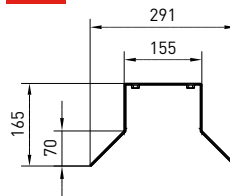
**NXWBPTH1**



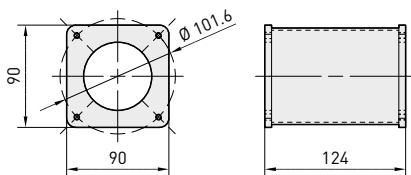
**NXCOL**



**NXCW**



**NXFWBT**

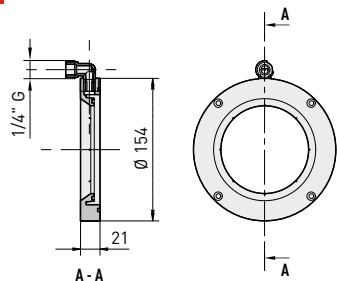


The values are in millimeters.

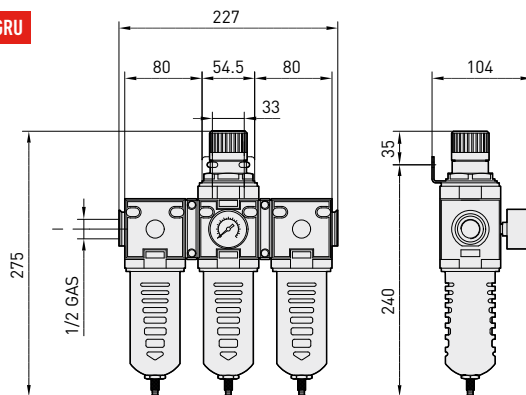
# INOX BRACKETS AND ACCESSORIES



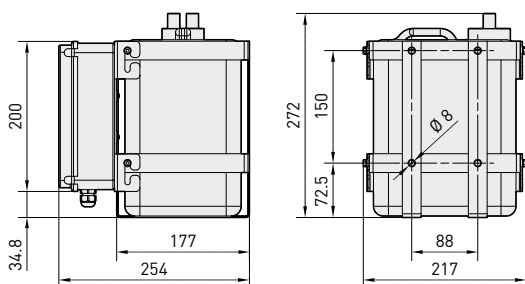
**ONXAB1**



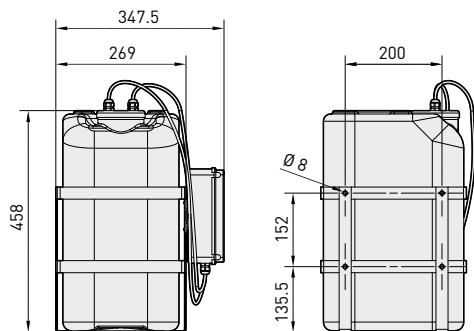
**NXFIGRU**



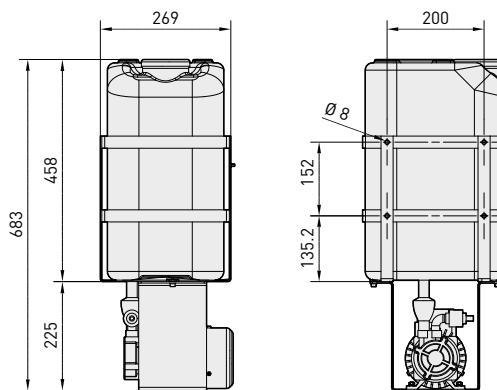
**VIP5WAS**



**VIP25WAS**



**VIP25WASA01**



5  
STAINLESS STEEL SYSTEMS



**Unit Weight:**

- NXWBS1 2.5kg / 5.5lb
- NXWBL 5.5kg / 12.1lb
- NXCW 1.2kg / 2.6lb
- NXCWL 3.3kg / 7.2lb
- NXWBPTH1 4.8kg / 10.6lb
- NXFWBT 0.9kg / 1.8lb
- ONXAB1 1.6kg / 3.5lb
- NXFIGRU 2.5kg / 5.5lb
- VIP5WAS 3.2kg / 7.0lb
- VIP25WAS 5.1kg / 11.2
- VIP25WASA01 13.3kg / 29.8lb

**Package Weight:**

- NXWBS1 2.8kg / 6.1lb
- NXWBL 5.6kg / 12.4lb
- NXCW 1.3kg / 2.8lb
- NXCWL 3.5kg / 7.7lb
- NXWBPTH1 4.8kg / 10.5lb
- NXFWBT 1kg / 2.2lb
- ONXAB1 1.8kg / 3.9lb
- NXFIGRU 3kg / 6.6lb
- VIP5WAS 3.7kg / 8.1lb
- VIP25WAS 6.1kg / 13.4lb
- VIP25WASA01 14.6kg / 32.2lb

**Package Dimensions (BxHxL):**

- NXWBS1 16x18.5x46cm / 6.2x7.2x18in
- NXWBL 19x16x60cm / 7.5x6.3x2in
- NXCW 24x32x24.5cm / 9.4x12.6x9.6in
- NXCWL 14x25.5x20cm / 5.5x10x7.8in
- NXWBPTH1 16x18.5x46cm / 6.2x7.2x18.1in
- NXFWBT 10x16x23cm / 3.9x6.3x9in
- ONXAB1 14x25.5x20cm / 5.5x10x7.8in
- NXFIGRU 34.5x24x15.5cm / 13.8x9.5x6.1in
- VIP5WAS 31x23.5x31cm / 12.2x9.3x12.2in
- VIP25WAS 39x33x56cm / 15.4x13.0x22.0in
- VIP25WASA01 35.5x45x80cm / 14x17.7x31.5in

**Master Carton:**

- NXWBS1 8 units
- NXWBL -
- NXCW 6 units
- NXCWL 10 units
- NXWBPTH1 8 units
- ONXAB1 -
- NXFIGRU -
- VIP5WAS -
- VIP25WAS -
- VIP25WASA01 -